



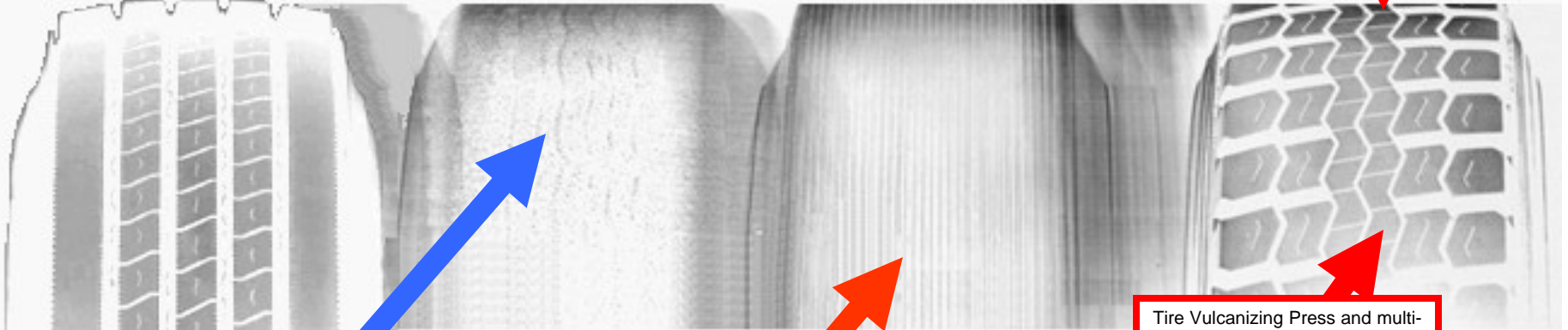
COMMERCIAL TIRE & SERVICE CENTERS

# Mold Cure Process Retreading

Mold cure processed retreads equal or exceed new tires of similar design for tread wear, traction and rolling efficiencies. Available in selected Wingfoot Centers in these tread designs:



Segmented mold used – best for radial casing fitment and like-new tire finished appearance



Computer controlled machine buffs worn casing to the exact specifications of the mold

Computer controlled machine applies rubber to the exact dimensions of the buffed casing

Tire Vulcanizing Press and multi-piece mold shape tire to "new" tire standards

