

**Type 2
Applicator**



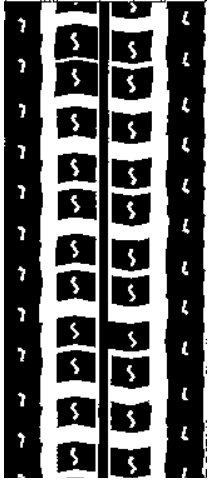
Laser marking line made on center of tread by Applicator – used as reference by Applicator to apply tread on casing centerline

The Unicircle System – Precision built retreads

- Goodyear tread rubber manufactured to match the original new tire tread pattern
- Unicircle treads are molded to fit the inflated, rolling shape of the radial truck tires
- Precision buffing of the worn casing to assure optimum radial and circumferential tread profile fitment
- Patented, computer controlled Unicircle tread building machine uses laser guided tread placement onto the casing.
- Unicircle retreads equal or exceed new tire tread wear, traction and rolling efficiencies.

G305 LHD 24

w/Fuel Max



G372 LHD

24



G362

22



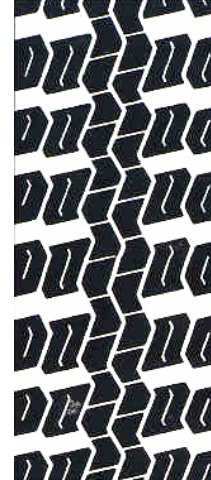
G182

28



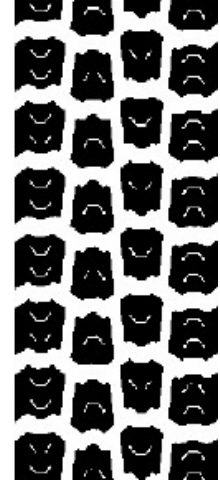
G167A

22



G338

27



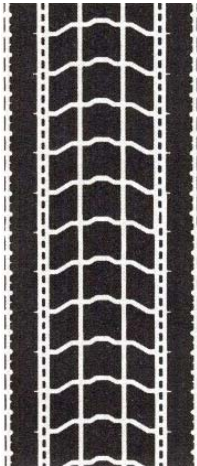
G316 LHT 12

w/Fuel Max



G314

12



G119

16



G647 RLT

16



Tread Design
Product Line